



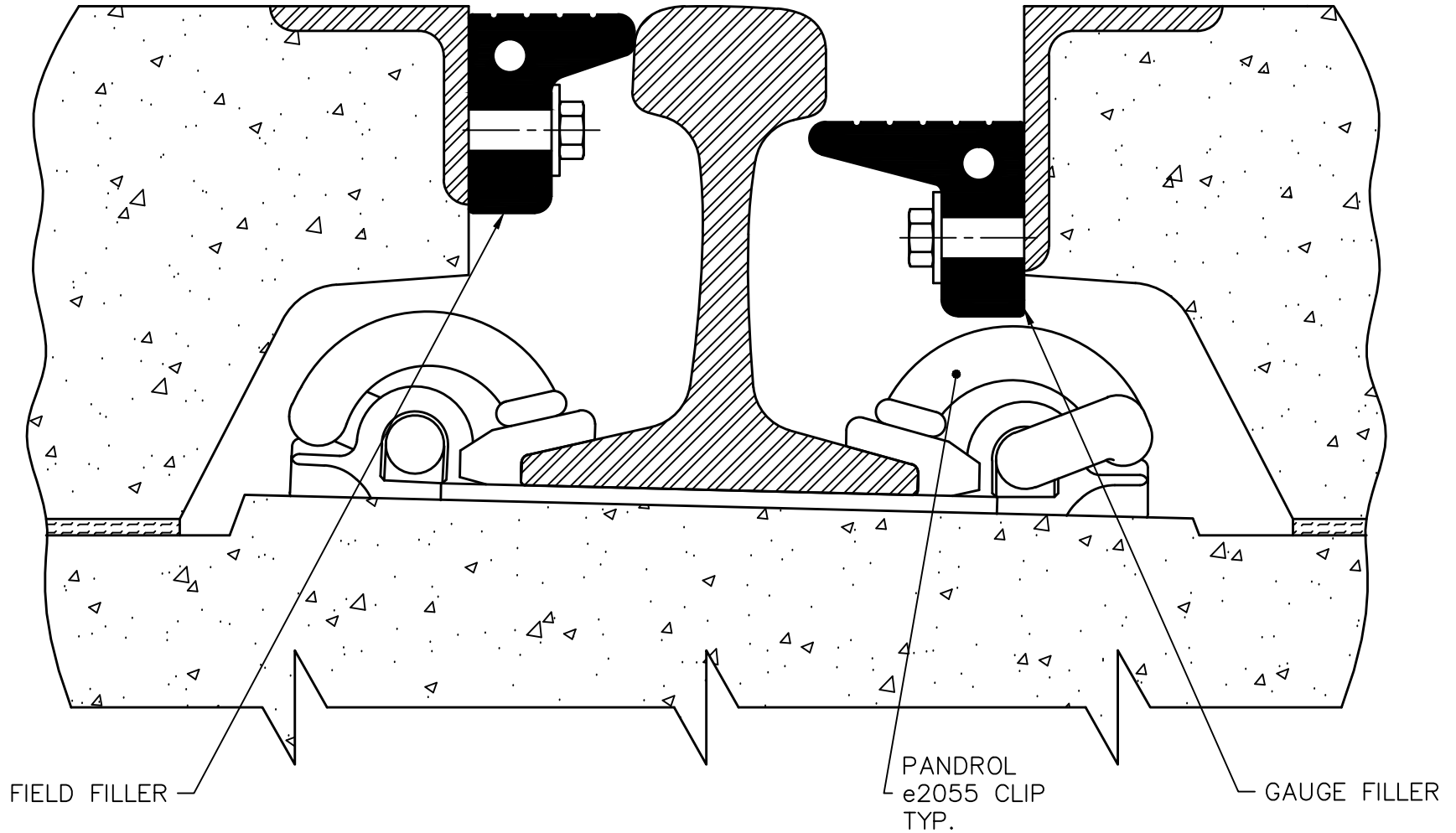
36 Raglin Place
Cambridge, Ontario
Canada N1R 7J2
1-888-222-5968

136-LB. A.R.E.A. ON CONCRETE TIE
WITH PANDROL e2055 CLIPS
BOLT-ON CONCRETE PANEL INSERT ASSEMBLY

THIS DRAWING IS FOR ILLUSTRATION
PURPOSES ONLY, IT IS NOT TO
SCALE AND DOES NOT CONFORM
TO ENGINEERING DRAWING
STANDARDS.

ILLUSTRATION No.

ILF1621



PATENTED